

Ron Hitchins

(1926 - 2019)

Artwork Catalog 8 June 2022

Ron Hitchins was a well known and well respected Hackney based artist. His estate endeavours to promote his life and art through the www.RonHitchins.com living museum website and via his Instagram feed

www.instagram.com/ron_hitchins_artwork/

Ron was a prolific artist and a selection of important pieces are to be exhibited in the London Victory & Albert museum. He has sold at Christie's and Bonham's amongst others and his work has appeared in the BBC's 'Antiques Roadshow'. A selection of Art work currently for sale is listed in this PDF catalog, but many more items can be viewed by appointment near his home in Hackney London.

Some of Ron's most prolific creations were his unique individually hand made 2" x 2" tiles (seen on the background image of this page). These were crafted over 40 years ago, stored in his attic and fired in his cellar. We have many terracotta tiles left as well as few in a variety of other colours and priced as memorabilia for his friends, supporters, admirers and collectors at **£10 a tile**.

At the beginning of 2023, Mike Jingle, who so valiantly initiated and captained the helm of the Ron Hitchins project, retired from day to day duties. Mike is still onboard as a consultant and to answer specific questions but we are delighted to announce that the exceptionally talented clothes and fashion designer Nathaniel Mackie has taken over the day to day tasks. Nathaniel was a very close personal friend of Ron's and will be administering the remaining artwork and any enquiries relating to current sales should be directed to him.

Contact:

Nathaniel Mackie +44 7841 507122

e-Mail: ateliermackie@gmail.com

Mike Jingle +34 699703984

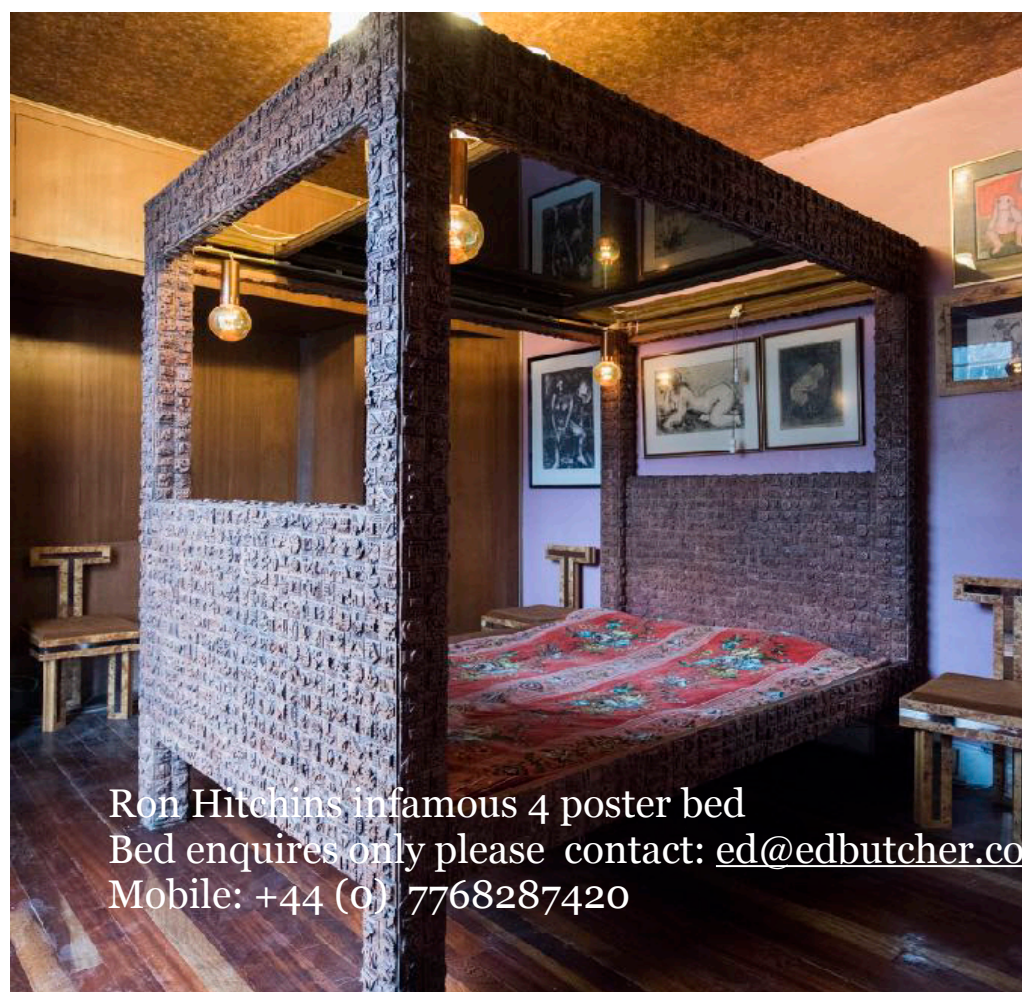
e-Mail: Flamenco.Jingle@hotmail.com

A Ron Hitchins framed panel is to be exhibited along with other examples of his artworks in the Victoria and Albert Museum London



Ron Hitchins personal autograph book

Autograph album - Large album signed by over 40 stars of stage and screen, including Ernest Hemingway, Ian Fleming, James Cagney, Edward G. Robinson, Sally Gray, John Coltrane, Phyllis Dixey, Laurence Olivier, Vivien Leigh, Beatrix Lehmann, Peter Graves, Tommy Handley, Patricia Burke, George Formby, John Anderson, Bing Crosby, Fred Astaire, Johnny Desmond, Elizabeth Allen, Charles Laughton, Teddy Knox, Basil Radford, Margaret Lockwood, Glynis Johns, Ralph Michael, Coral Browne, Joe Louis, Elisabeth Welch, Jean Gillie, Yvonne Arnaud, Angela Baddeley, Eileen Bennett, Broderick Crawford and others, some signatures back to back, pages measure 15 x 19 cm.



Ron Hitchins infamous 4 poster bed
Bed enquires only please contact: ed@edbutcher.co.uk
Mobile: +44 (0) 7768287420



A selection of (12" x 12" x 2") rustic, silver, gold and grey fibreglass tiles. Starting from above left is one example from the eight remaining of twenty five unique original tiles that lined the outside of Ron's house. The full selections of all tiles appear later in this catalog. Next we have one sample from fourteen of a silver tile that was displayed in Ron's bathroom. Third in the row we have one of twelve gold tiles that were displayed in various places throughout the house. Lastly we have one of eleven weathered tiles featured above the garden gates which are also somewhat thinner.

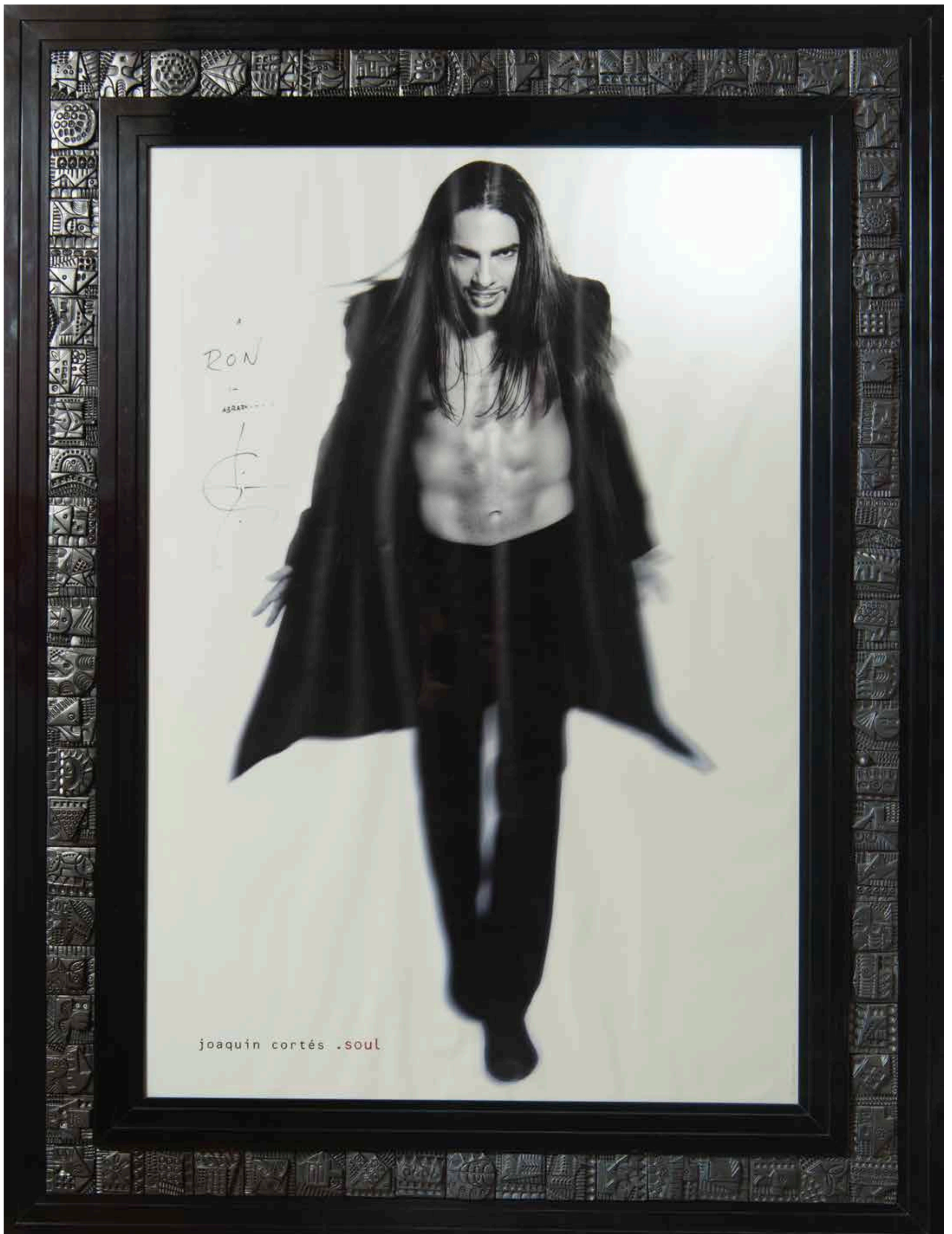


A substantial collection of original and unique, individually hand-made ceramic terracotta tiles, created over many years and concealed in Ron's attic for decades. These tiles are specially priced at £10 each to allow admirers and collectors alike to own a little piece of Ron. (2"x 2"x 0.5")





8 magnificence rustic tiles (12" x 12" x 2") which previously adorned the side of Ron's Hackney home, available separately or as a full panel or smaller groupings.



A magnificent black charcoal framed photograph of Joaquín Cortés the famous flamenco dancer - signed (38" x 50") POA



These tiles can be bought separately but are particularly effective when grouped into panels



(12" x 12" x 2") fibre glass tiles





An interesting grouping of 6 tiles.

Ron designed his tile art to be grouped into panels, he would sometimes have small groups of 2, 4, 6, 8 or much larger tile groups creating more impact covering a whole wall, it's now your turn to design what you want.

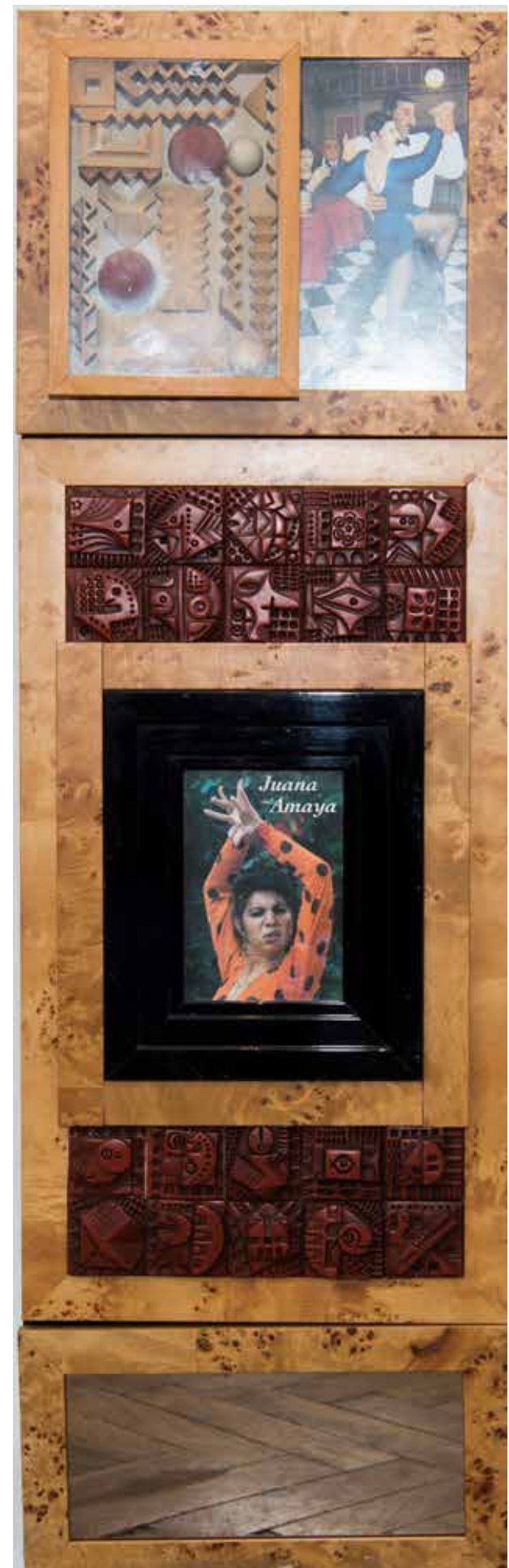
(12" x 12" x 2") fibre glass tiles



One of Ron's 'puzzles' a wooden ochre architectural sculpture. (20cm x 60cm x 102cm)
POA



A striking and unusual coloured glass sculpture from Ron, one of a kind



Beautiful maple veneered and terracotta tiled cabinet (105" h x 31-5" w x 37" d)
POA



1/5 scale models of Roy's famous terracotta tile bed produced as a "Cat Bed" but usage is only limited only by your imagination. **POA**





The very large magnificent terracotta tile bordered mirror from Roy's living room featured in the 360 walk through section of Ron's website. (252cm x 133cm), 272 (2" x 2") terracotta tiles. POA



Framed cats - sentimental, 30 x (2" x 2" x 0.5") unique hand crafted painted terracotta tiles framing 2 photos of Ron's cat (18" x 18")



8 beautifully sculptured rectangular
fibreglass tiles in different colours,
(20cm x 33cm x 4cm)





(12" x 12" x 2") fibre glass tiles



An interesting grouping of 8 tiles.
 Ron designed his tile art to be grouped into panels,
 he would sometimes have small groups of 2, 4, 6, 8
 or much larger tile groups creating more impact
 covering a whole wall, it's now your turn to design
 what you want.



Tiled framed picture
panels (67cm x 133cm)
POA





One off tile screw
and nail panel (122
cm x 17.5 cm) POA



45.5cm x 15cm



Fibreglass panel
(59cm x 15cm x 2
cm)



3 unusual composite framed and tiled square fibreglass panels made
from a mold but with uniquely different centre tiles. (42cm x 42cm).
5 original molds and his fabrication technique is also available. POA



Only copy - photograph of
Ron framed in maple POA



A framed picture of his friend
Dana Giles, singer /
songwriter and model POA



RoHo (Roco) hand stencilled
CDs mounted in a maple
frame celebrating famous
flamenco artists.
(44cm x 49cm) POA



Examples of a number of terracotta
hand made pedants each with a
unique design approx. 3.5" long.



£75 each



162 x (2"x 2" x 0.5") hand made painted terracotta tiles
unframed panel POA



Ron Hitchins dark red wooden
framed/blue ceramic tiled mirror, 92
individual hand made tiles.
(62cm x 87cm) POA



Weathered fibreglass panel
tiles from above Ron's front
garden gates



Hand Painted
mannequin POA



Unusual metal
sculpture mounted on
wood POA



Hand Painted
mannequin POA